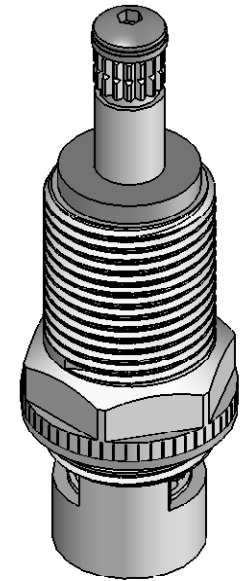
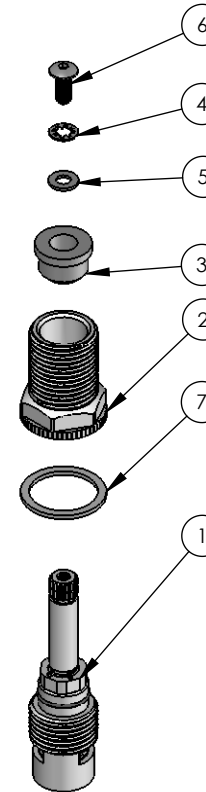


ITEM NO.	PART NUMBER	DESCRIPTION	QTY.
1	891395	Q/TURN 2L RAYMOR 80mm CONTRA	1
2	891290	LOCKNUT 2L 5/8 INCH BSP 35mm	1
3	693089	BUSH - FRICTION Q/TURN 2L	1
4	672593	WASHER-M5 INT TOOTH 304 S/S	1
5	672603	WASHER-NYLON 5X10	1
6	891458	SCREW M5X12 BUT S/S 304 SOC HD LOCTITE	1
7	672590	WASHER - RED FIBRE 28.5 X 23 X 1.5MM SBA	1



REV	DATE	CN	AMMENDMENTS	MODIFIED BY
A	11/06/06		FIRST ISSUE	
B	25/02/08		REDRAWN. 85 WAS 80. 891395, 891290, 672603 & 672590 ADDED.	SM

**GENERAL NOTES:**  
 REMOVE ALL BURRS AND SHARP EDGES UNLESS OTHERWISE STATED  
 DIMENSIONS ARE IN mm's

**TOLERANCE EXCEPT WHERE STATED:**

NO DECIMAL POINT     $\pm 0.2$   
 ONE DECIMAL PLACE     $\pm 0.1$   
 TWO DECIMAL PLACES     $\pm 0.05$   
 ANGLES     $\pm 1$

**ENWARE RESERVES THE RIGHT TO AMEND PRODUCT SPECIFICATIONS AND DESIGNS WITHOUT NOTICE.**

DRAWN	AC	9 Endeavour Rd, Caringbah, NSW, 2229 Ph. 61-2-9525-9511 Fax. 61-2-9524-8421	
CHECKED			
APPROVED			
TITLE: <b>EXPO STD RECESS SBA</b>			
Scale: Not To Scale		Scale: Not To Scale	
MATERIAL:			
FINISH:			
This drawing is the Copyright of Enware Australia Pty Ltd and may not be reproduced in full or part without the written consent of Enware Australia Pty Ltd		DWG NO. <b>EX382</b>	SHEET 1 OF 1